

# METROPOLITAN ATLANTA RAPID TRANSIT AUTHORITY



## CLAYTON COUNTY HIGH CAPACITY TRANSIT UPDATE

Stakeholder Advisory  
Committee  
October 27, 2016

# Agenda

- Welcome/Introductions
- Project Overview
- Roles and Responsibilities
- Baseline Conditions
- Key Findings
- Questions
- Group Exercise
- Next Steps

# PROJECT OVERVIEW

# Project Background

- C-TRAN started serving Clayton County in 2001
- Service discontinued in March 2010 due to lack of funding
- Continued need for transit to access jobs and services
- Connectivity to regional transit system
- Promote more economic development opportunities



# Previous Studies

- Countywide Comprehensive Transportation Plans (CTPs)
- Transit Service Plans
- City Comprehensive Plans
- Livable Centers Initiative (LCI) Studies
- *Clayton Extension Report* (June 2014)
- *Clayton County High Capacity Transit – Conceptual Planning Technical Memorandum* (September 2014)
- *Clayton County Transit Service Plan* (April 2015)

# Clayton County Tax Referendum

- Approved on November 4, 2014
- One-cent sales tax to extend MARTA into the County including:
  - Bus
  - Paratransit (Mobility)
  - High Capacity Transit Service
- Bus service started in March 2015
- High Capacity Transit to be implemented in the future

# Existing Transit Service

- MARTA Bus Service
  - 9 local routes serving Clayton County
  - 16,200 average daily boardings
  - Connections to MARTA Rail at College Park and East Point stations
  
- GRTA Xpress Service
  - 6 express routes connecting commuters to Downtown/Midtown Atlanta
  - 2,300 average daily boardings



# High Capacity Transit Initiative

- Study Purpose:
  - Analyze and evaluate a range of potential high capacity transit corridors
  - Determine a Locally Preferred Alternative (LPA)
  - Conduct environmental planning to enter into Project Development
- Deliverables:
  - Draft and Final Environmental Documents
- Schedule:
  - Study completion in 2018
  - Prepare for future phases of implementation (final design, construction)

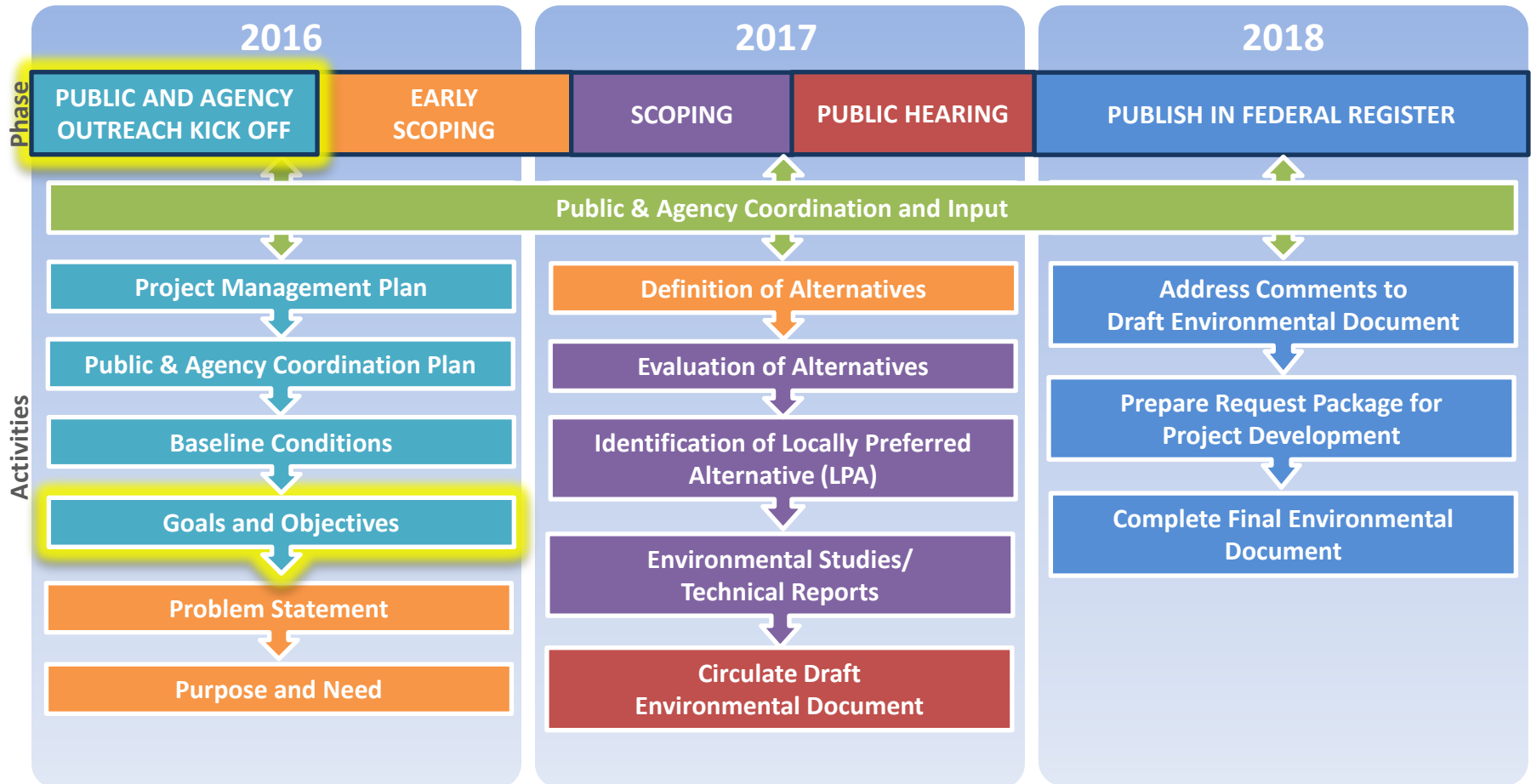


# What is High Capacity Service?

- High Capacity service features include:
  - Fixed-guideway/exclusive lanes
  - Larger transit vehicles
  - Fewer transit stops
  - More frequent service
  - Higher travel speeds
  - New transit stations with passenger amenities
- Transit technologies include:
  - Heavy rail transit (HRT)
  - Commuter rail transit (CRT)
  - Light rail transit (LRT)
  - Bus rapid transit (BRT)



# Project Schedule



# Public and Agency Coordination

- Communication Tools:
  - Project Identity/Logo
  - Project Website
  - Print and Electronic Media
- Public Outreach Tools:
  - Public Meetings and Hearings
  - Alignment Tours and Community Events
- Stakeholder/Agency Coordination:
  - Technical Advisory Committee (TAC)
  - Stakeholder Advisory Committee (SAC)
  - Citizens Advisory Group (CAG)



# Roles and Responsibilities

# Stakeholder Advisory Committee

- Represent organization's and constituents' interest
- Review and disseminate project information
- Provide input and guidance to project team
- Meet six times during the process at key milestones



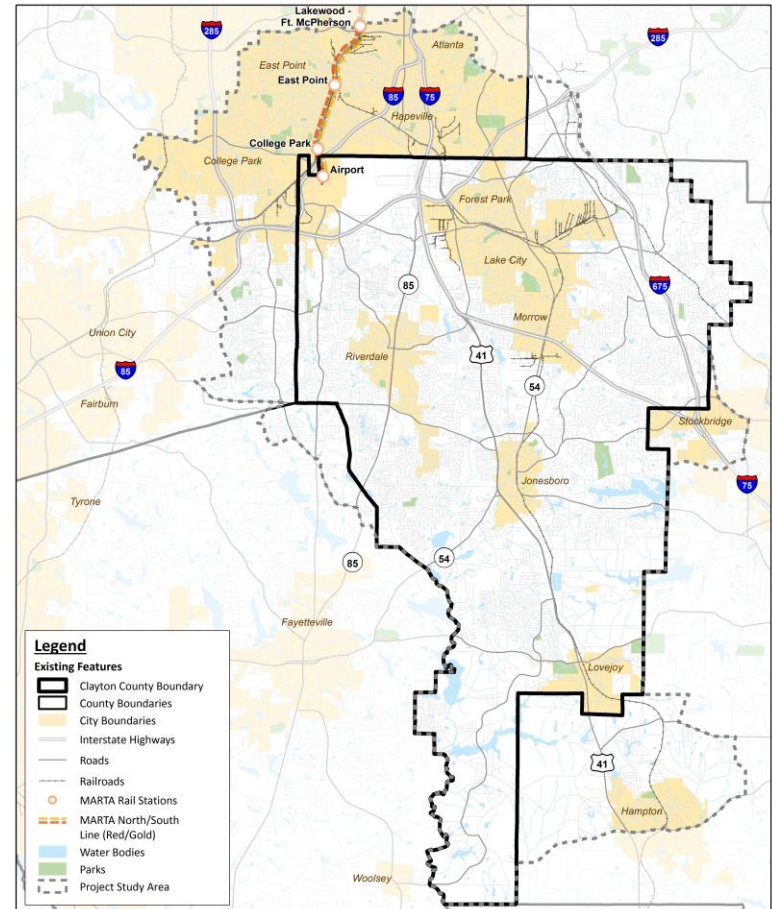
# Baseline Conditions

# Purpose

- Collect existing and future conditions data
  - Population and employment
  - Socioeconomic demographics
  - Land use and development patterns
  - Economic development activity and trends
  - Transportation system performance and travel trends
- Data will help:
  - Identify study goals and objectives
  - Determine purpose and need

# Study Area

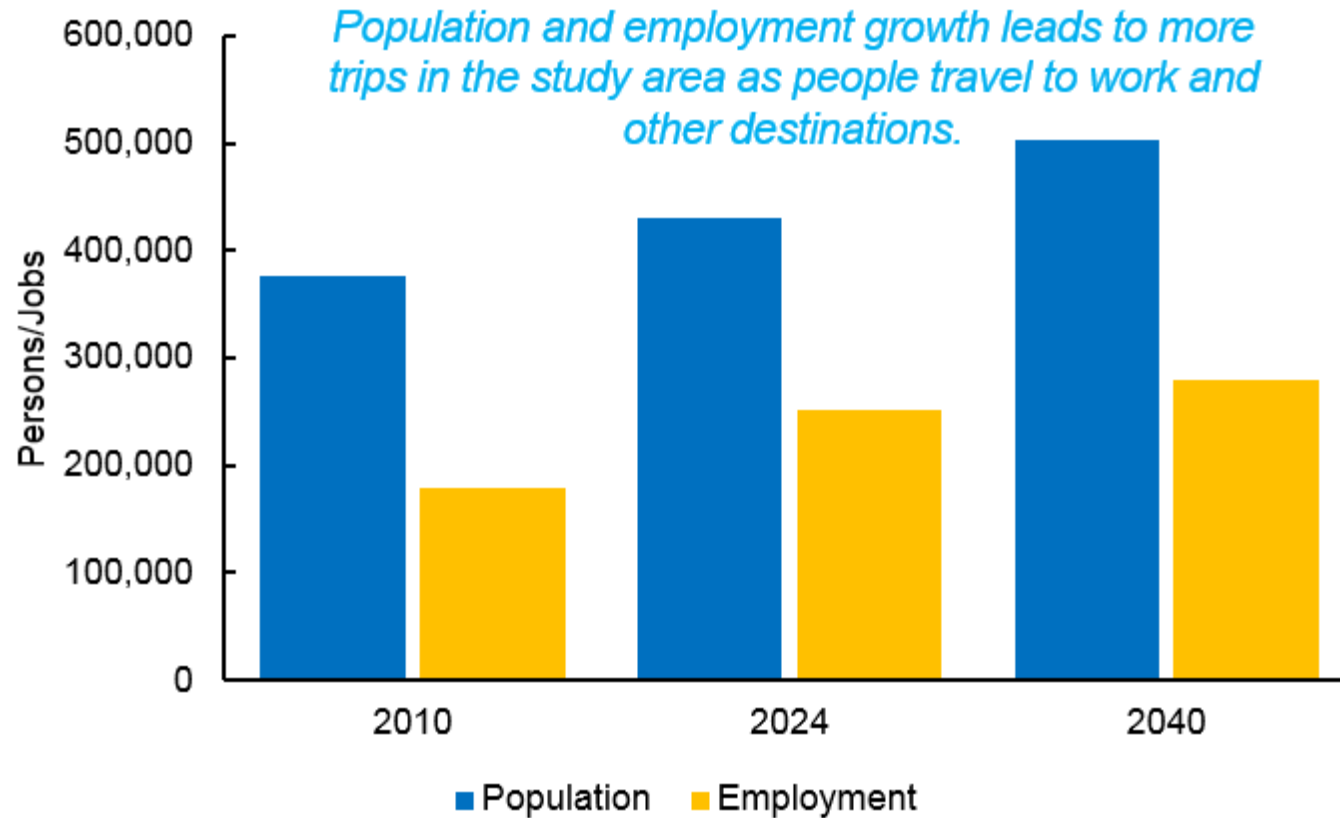
- Incorporated and unincorporated Clayton County
- Portions of DeKalb, Fayette, Fulton, and Henry Counties
- Cities of Atlanta, College Park, East Point, and Hapeville



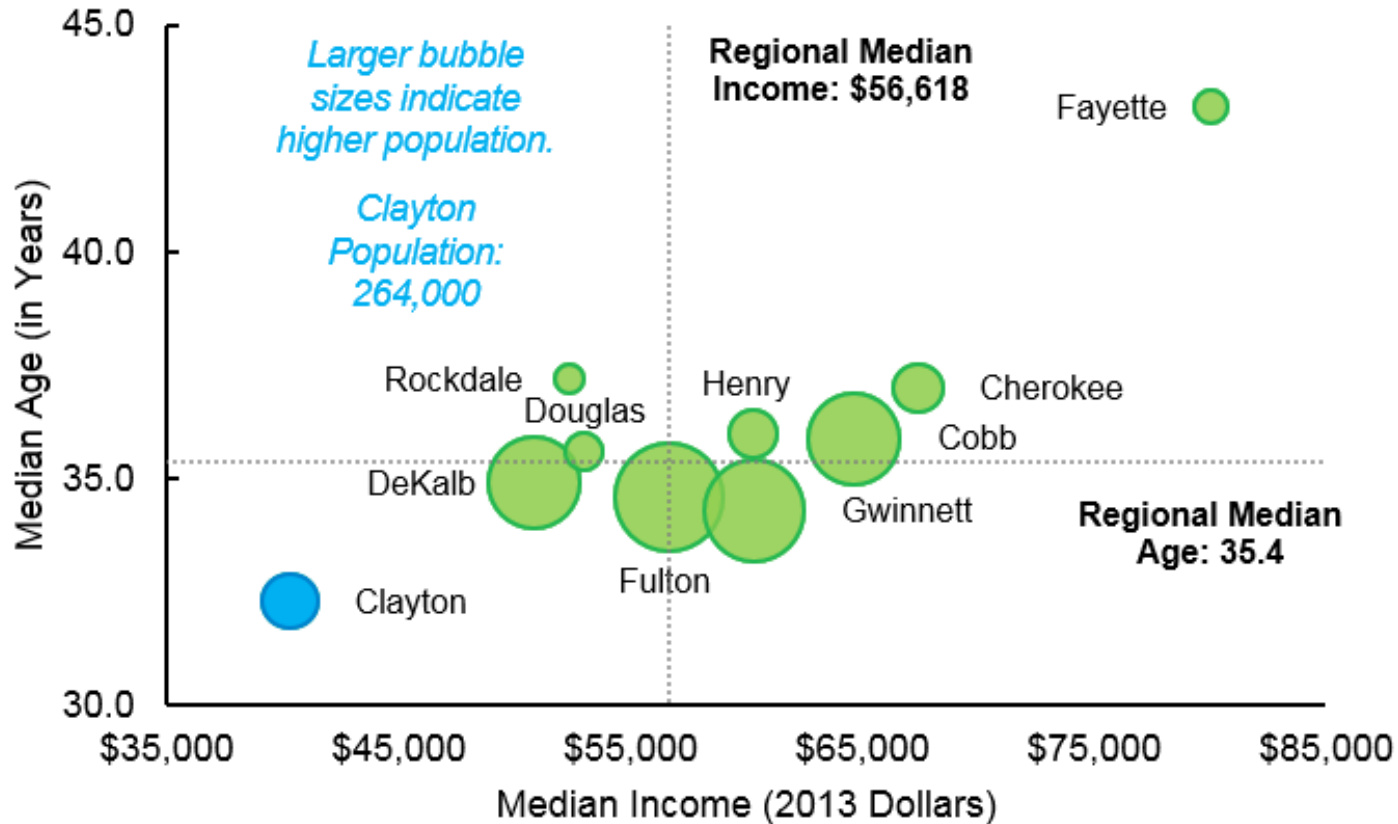


# Key Findings

# Socioeconomic/Demographics

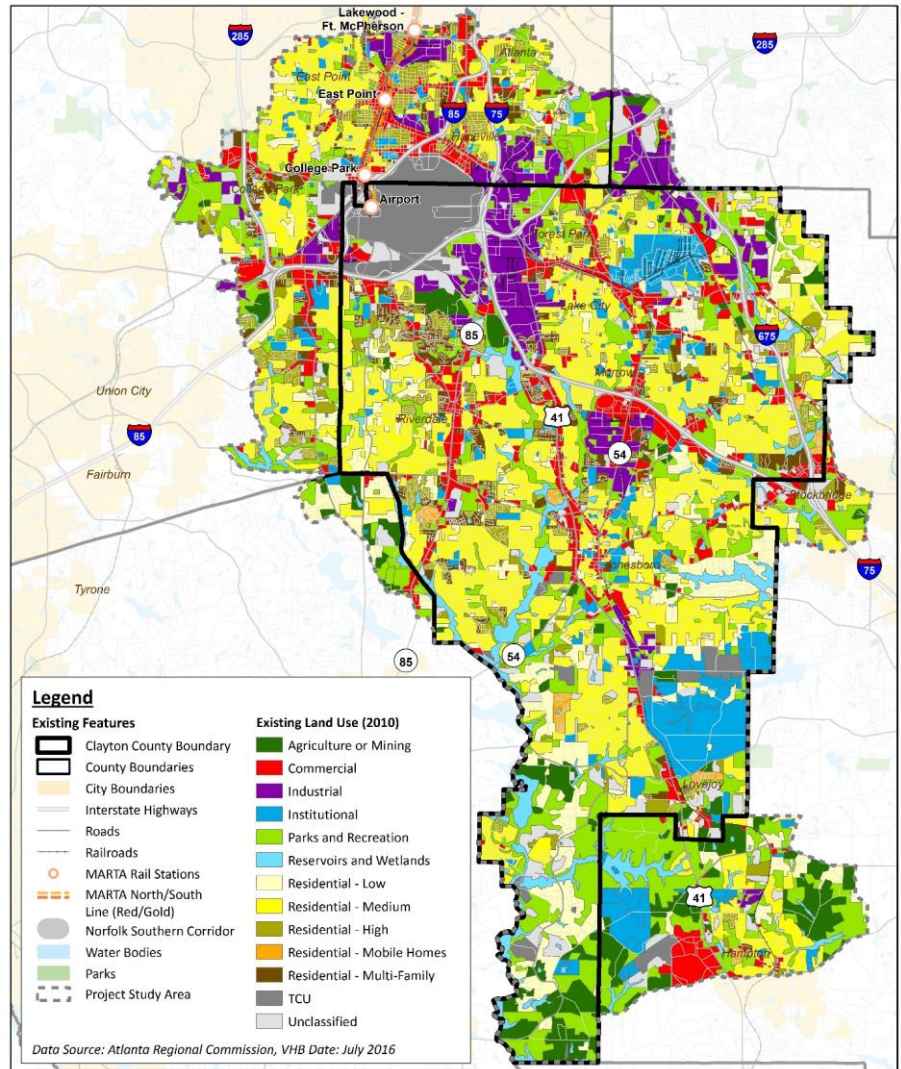


# Socioeconomic/Demographics



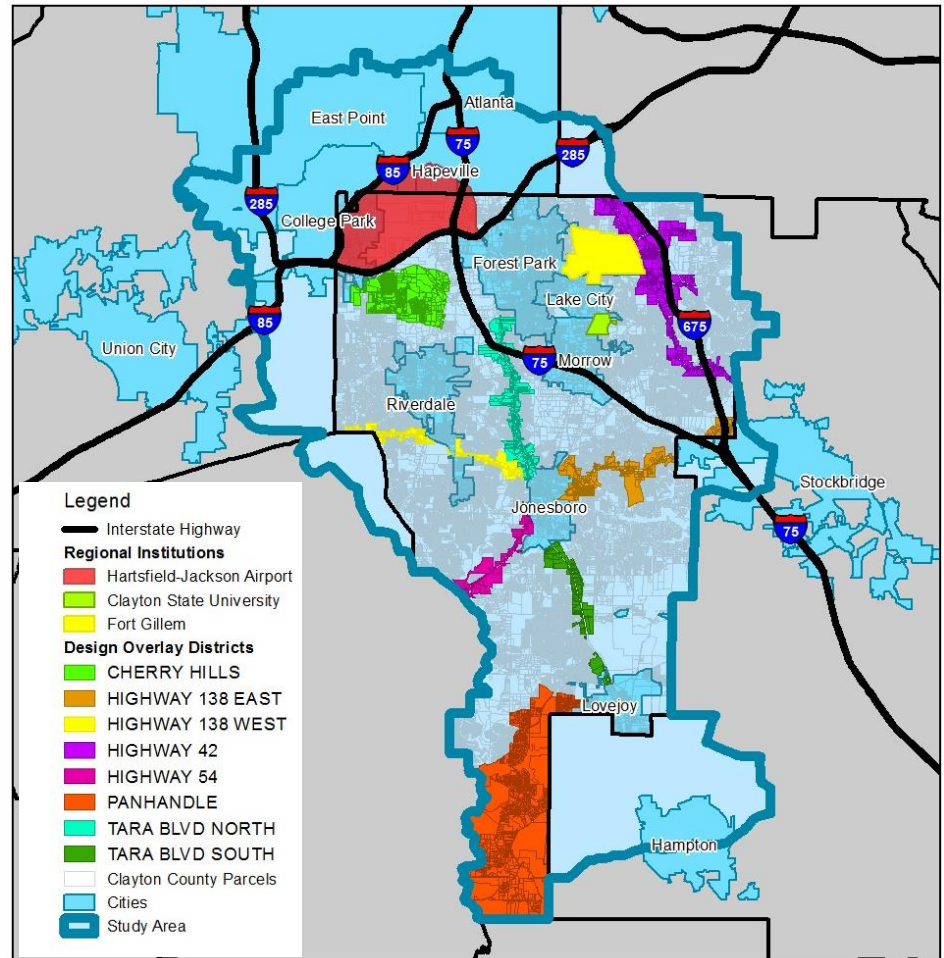
# Land Use/ Development

- Mostly low to medium density residential
- Transit supportive land uses and design elements at existing town centers
- Most development occurring in northern portion of study area



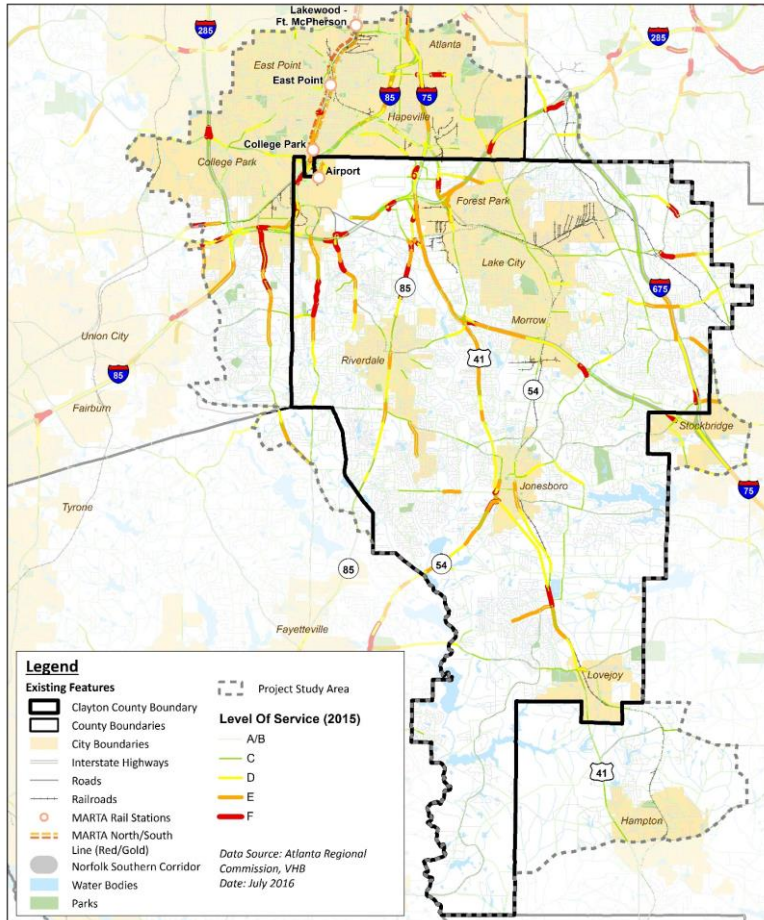
# Economic Development

- Town Centers
- Fort Gillem
- South Lake Mall/Mt. Zion
- Aerotropolis
- Clayton State University
- Market sector growth targeted:
  - Manufacturing
  - Aerospace & Aviation
  - Logistics/Transportation
  - Bio/Life & Health Services

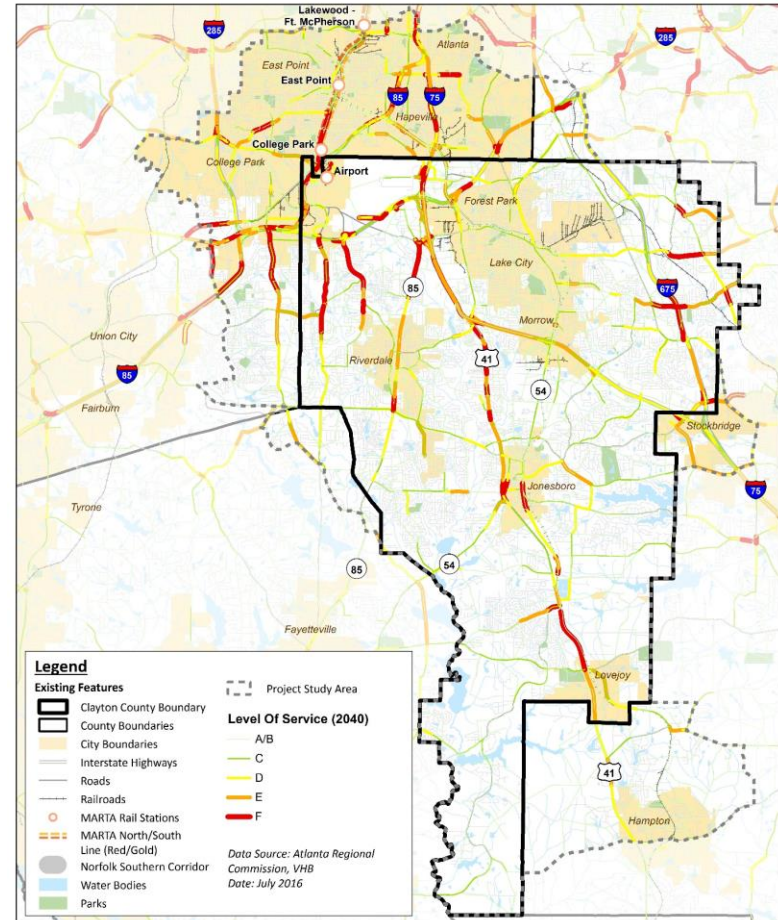


# Transportation System

## Existing (2015) – Roadway LOS

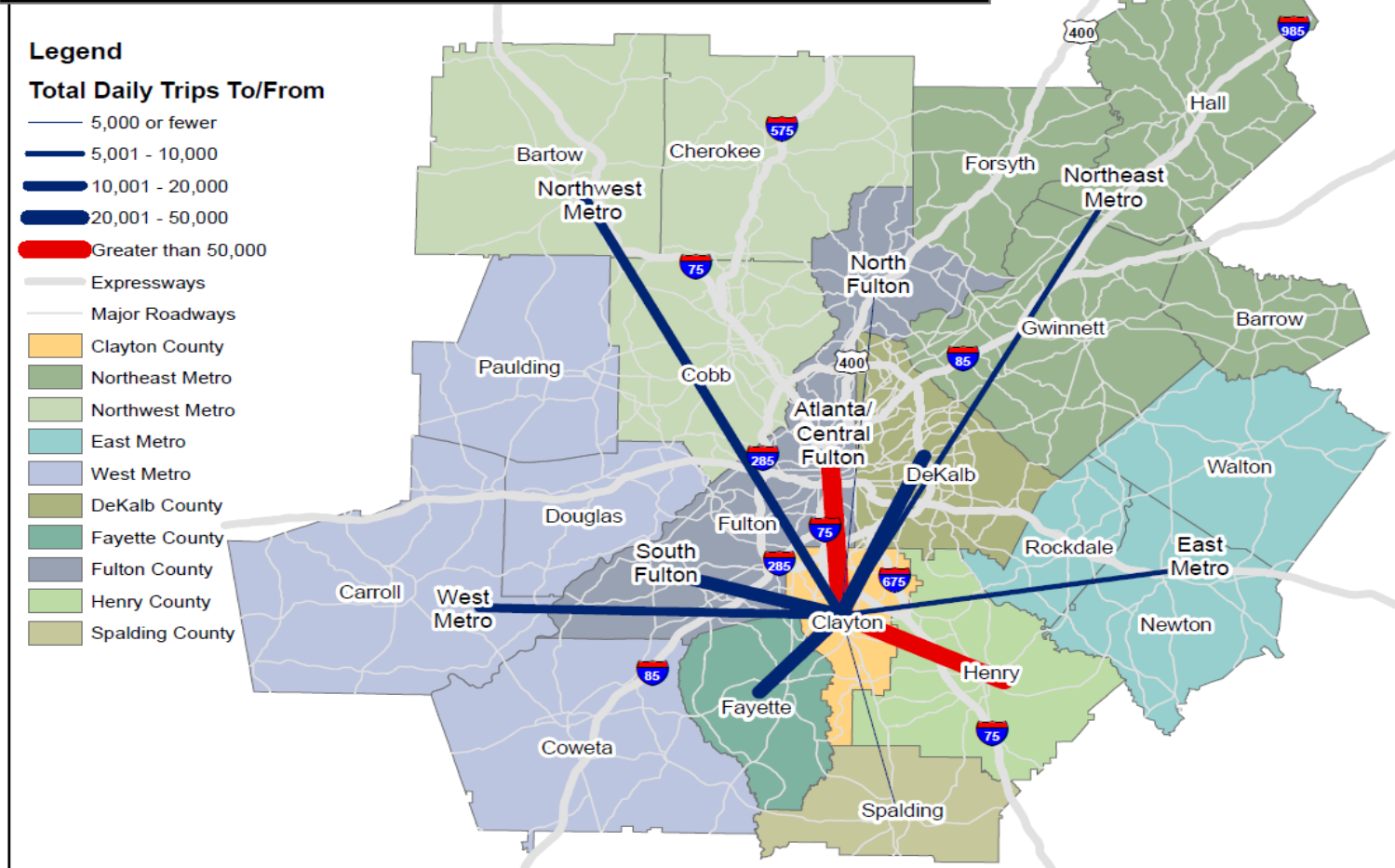


## Future (2040) – Roadway LOS

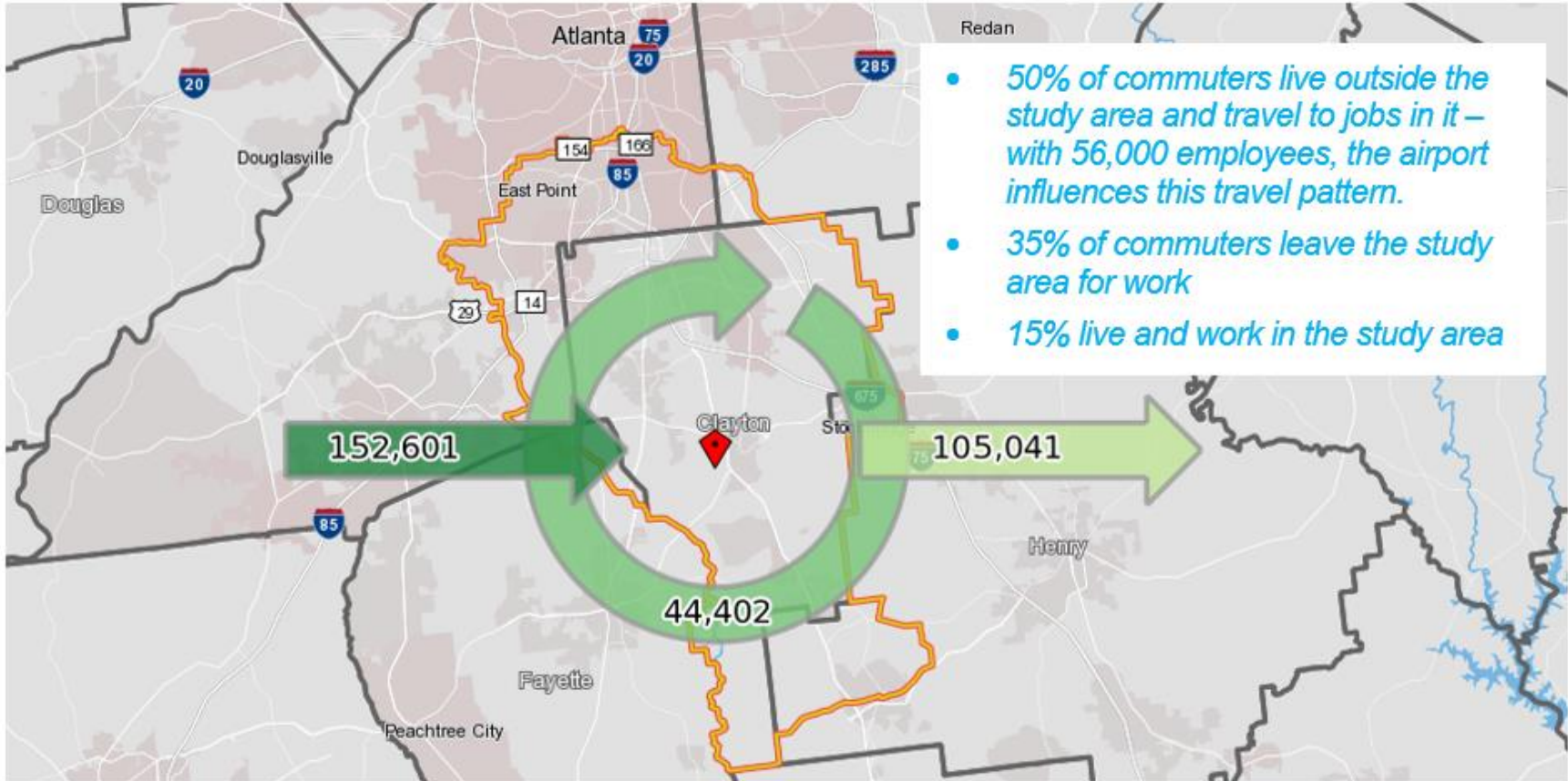


# Travel Trends

## Regional Daily Trips to/from Clayton County

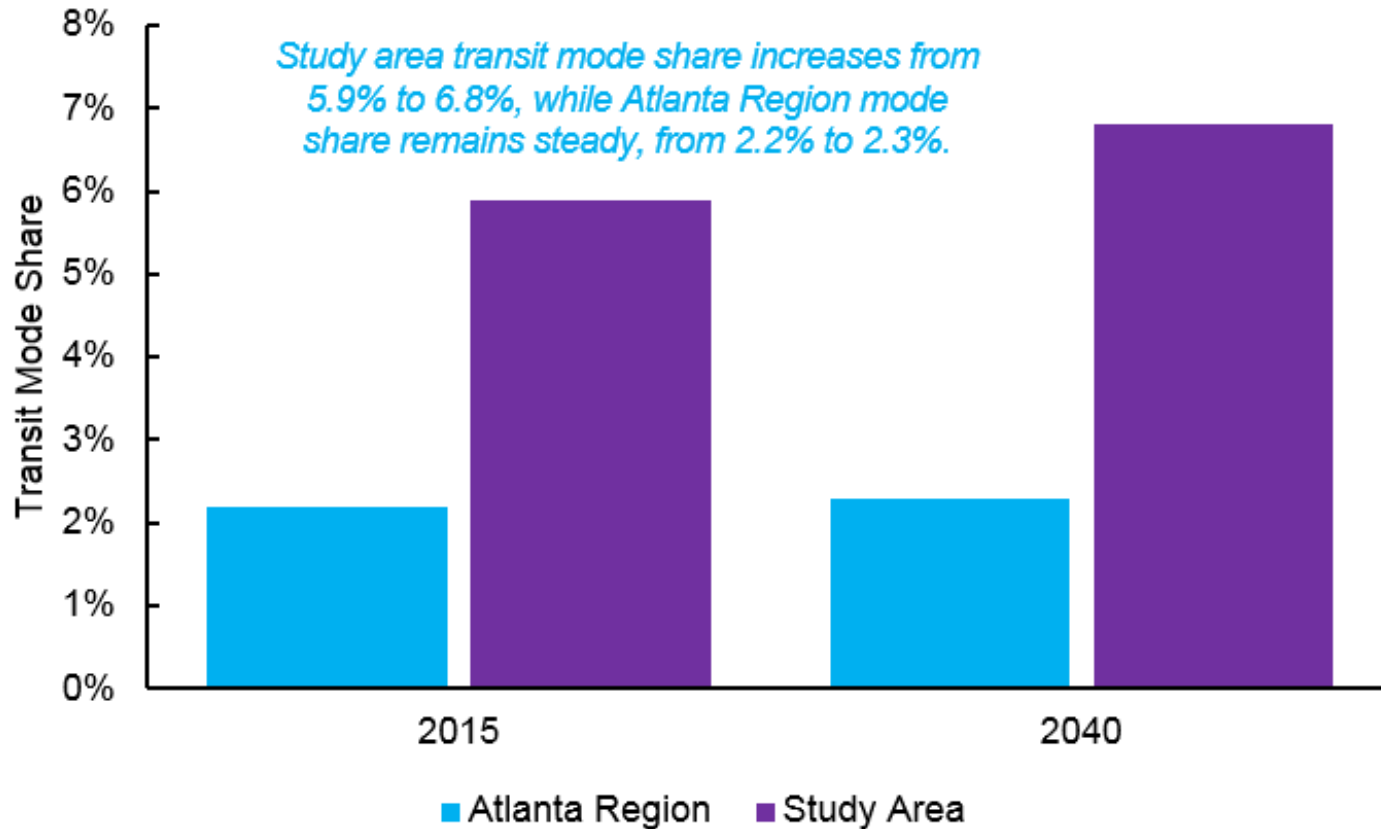


# Travel Trends





# Travel Trends



# Summary of Key Themes

- Continued population and employment growth
- Increased demand on transportation networks to access jobs
- Increased traffic congestion - Tara Blvd, SR85, SR54, SR138 & I-75
- Growing demand for transit for local and regional trips
- Transit supportive development is needed along major corridors
- Most development activity occurring in northern half of County

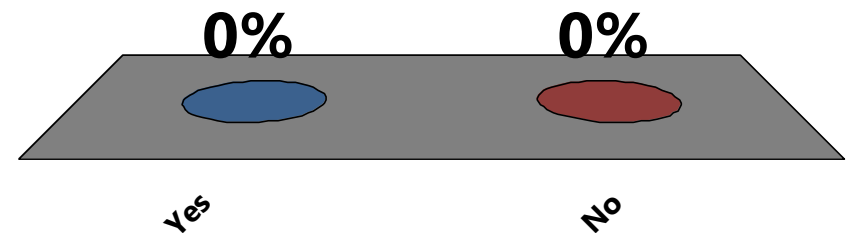
# Questions?



# Group Exercise

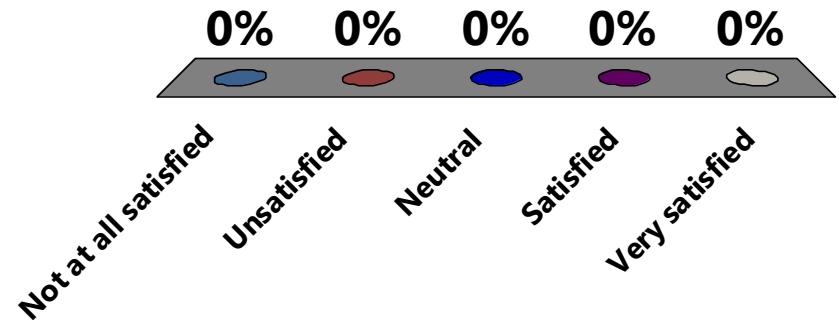
# Group Exercise

- Do you like ice cream?
  1. Yes
  2. No



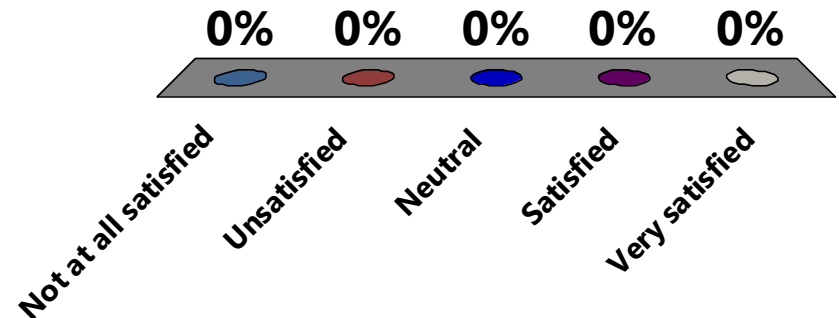
# Group Exercise

- How satisfied are you with the current MARTA and GRTA transit frequency in the study area?
  1. Not at all satisfied
  2. Unsatisfied
  3. Neutral
  4. Satisfied
  5. Very satisfied



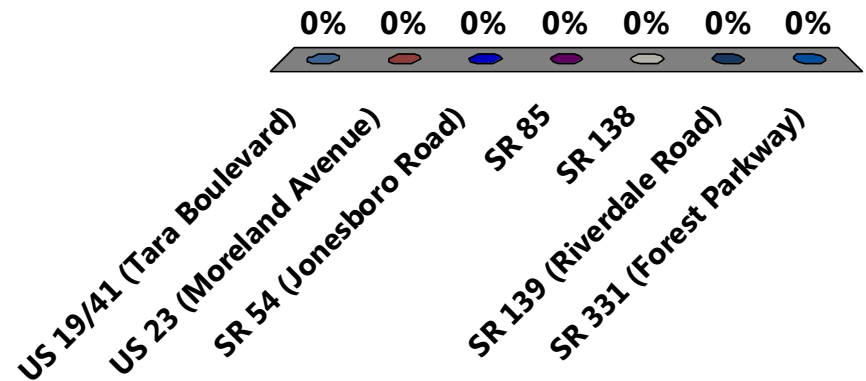
# Group Exercise

- How satisfied are you with the current MARTA and GRTA transit coverage in the study area?
  1. Not at all satisfied
  2. Unsatisfied
  3. Neutral
  4. Satisfied
  5. Very satisfied



# Group Exercise

- What are the most important major corridors for improved transit service (choose the top 3)?
1. US 19/41 (Tara Boulevard)
  2. US 23 (Moreland Avenue)
  3. SR 54 (Jonesboro Road)
  4. SR 85
  5. SR 138
  6. SR 139 (Riverdale Road)
  7. SR 331 (Forest Parkway)

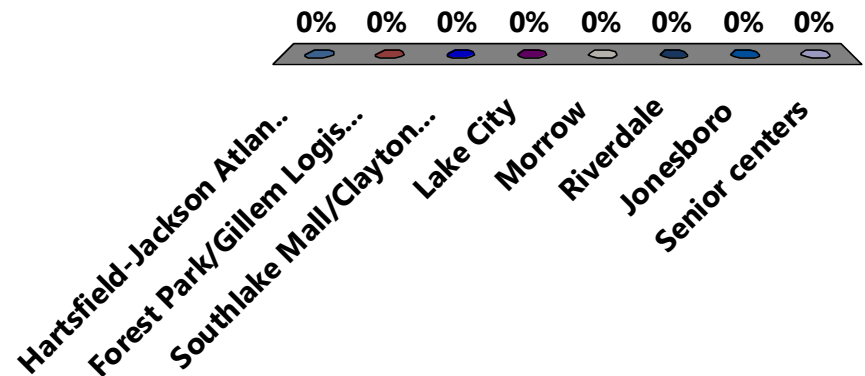




# Group Exercise

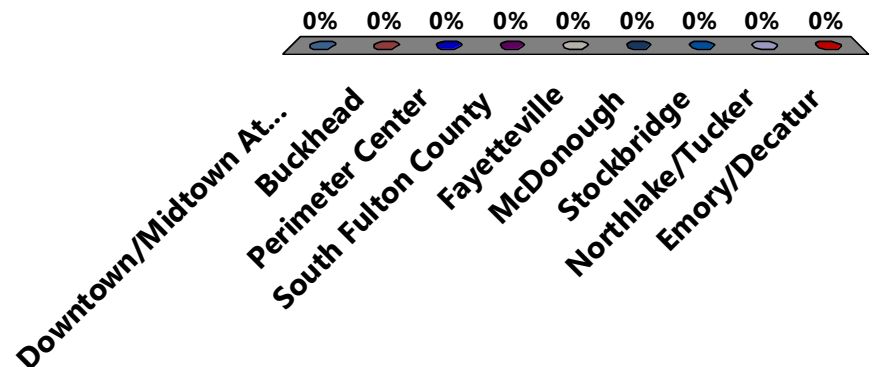
- What do you see as the major destinations in the study area (choose the top 3)?

1. Hartsfield-Jackson Atlanta International Airport
2. Forest Park/Gillem Logistics Center (Old Fort Gillem)
3. Southlake Mall/Clayton State University
4. Lake City
5. Morrow
6. Riverdale
7. Jonesboro
8. Senior centers



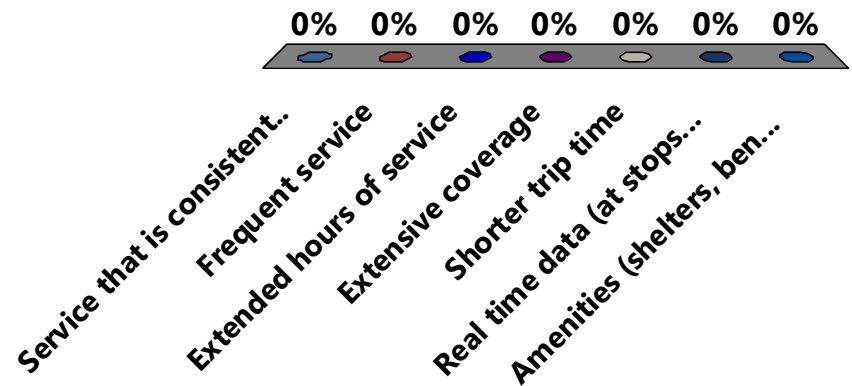
# Group Exercise

- What do you see as the major destinations in the region (choose the top 3)?
1. Downtown/Midtown Atlanta
  2. Buckhead
  3. Perimeter Center
  4. South Fulton County
  5. Fayetteville
  6. McDonough
  7. Stockbridge
  8. Northlake/Tucker
  9. Emory/Decatur



# Group Exercise

- What is the most important characteristic of transit to you (choose the top two)?
  1. Service that is consistently on-time
  2. Frequent service
  3. Extended hours of service
  4. Extensive coverage
  5. Shorter trip time
  6. Real time data (at stops and on a mobile app)
  7. Amenities (shelters, benches, trash cans, etc.)



# Group Exercise

- What are the major constraints within the study area?

# Group Exercise

- Are you aware of any upcoming/planned developments that might affect the study?

# Next Steps

# Next Steps

- Conduct Kick Off Public Meetings
  - November 10, 2016 – 6:00 p.m.- 8:00 p.m.  
Riverdale Town Center
  - November 17, 2016 – 6:00 p.m.- 8:00 p.m.  
Clayton State University
- Continue public and corridor stakeholder outreach
- Continue data collection and analysis
- Develop Purpose and Need